

# John Deere Gen4 Monitor USB Export

**Step 1:** Turn key power on and let monitor fully load Settings  
(accept all warning messages before moving to step 2)

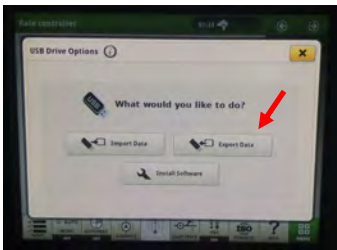
**Step 2:** Insert Flash Drive into the USB port

**Note:** 4640 displays have the USB port located on the right side of the monitor  
(see top image)

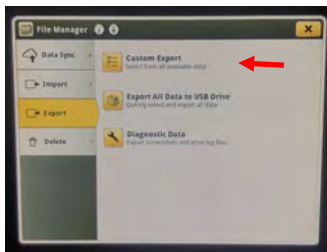
Command Center (armrest) display USB ports are located near the cup holders  
on the right side of the vehicle cab (see bottom image)

**Note:** Use an Empty Thumbdrive for each Monitor Export (CAN NOT decipher monitor exports by 'Profile Name' like on the Gen3 Monitors, Data will be overwritten).

**Step 3:** Click 'Export Data'

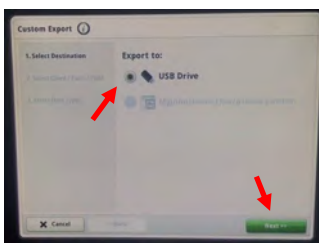


**Step 4:** Select 'Custom Export' Method

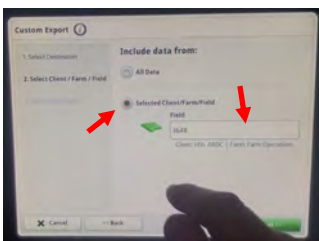


**Note:** The 'Custom Export' method is the ONLY method that allows you to export data for a single field.

**Step 5:** Select Export Location 'USB Drive' and Click 'Next'



**Step 6:** Select 'Client/Farm/Field' Method and then Click the 'Field' Listbox



**Note:** If you do not want to export data from a single field, you can export data from all fields by clicking 'All Data', 'Next', and then skip step 7.

**Step 7:** Select Desired Field to Export from and Click 'OK' and then 'Next'

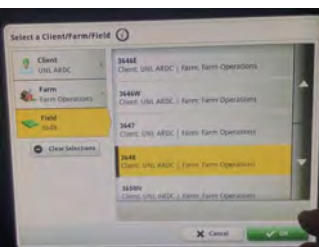


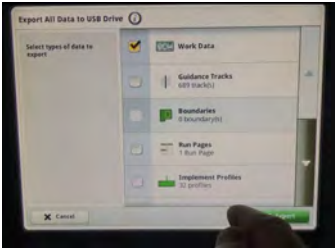
Photo credit John Deere ( <https://www.deere.com/en/technology-products/precision-ag-technology/> )



Photo Credit John Deere ( <https://www.deere.com/en/tractors/row-crop-tractors/row-crop-8-family/8245r-tractor/> )

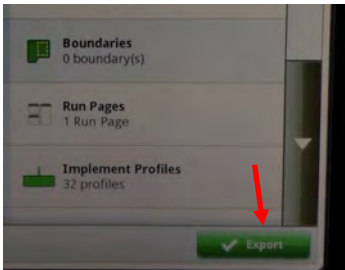
## John Deere Gen4 Monitor Export Continued

**Step 8:** Select the 'Work Data' Data Type



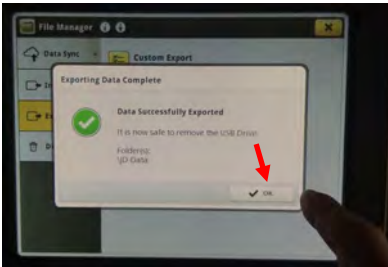
**Note:** Un-select all data types except for 'Work Data'. Work data is all of the as applied application or yield data and should be the only information you need. (leaving other datatypes selected such as setup data, guidance tracks, boundaries, & implement profiles could extend the export time to upwards of 1 - 1.5 hrs). Work data export times will vary based on the amount of data stored on the monitor, but typically take less than 5 minutes.

**Step 9:** Click 'Export' (bottom right corner of Screen ; Highlighted in Green)



**Note:** DO NOT cycle key power during the export process, which includes starting the vehicle if the vehicle was not already running, or shutting off the vehicle while it is running.

**Step 10:** Remove USB thumbdrive and Click 'OK'



**Note:** After the Monitor displays a message indicating a successful export, you can then remove the USB thumbdrive from the monitor or vehicle and Click OK.

**This concludes the export process and your dataset is now ready to be read into any compatible Precision Ag Software program**

**Note:** With a Direct Monitor to USB thumbdrive export, everything currently stored in the monitor will be exported to the thumbdrive. The Data will now reside in both locations (Monitor & USB Thumbdrive)

Single Field Data Exports from a Monitor to a USB Thumbdrive is ONLY an Option when using a John Deere Gen4 Monitor